



## HEAVY VEHICLE NATIONAL LAW

### Victoria Class 1 Load Carrying Vehicle and Special Purpose Vehicle Mass And Dimension Exemption Notice 2019 (No. 1)

#### PART 1: PRELIMINARY

##### Purpose

1. The purpose of this Notice is to exempt the categories of Class 1 Heavy Vehicles specified in this Notice from—
  - a) the prescribed mass requirements specified in the Notice; and
  - b) the prescribed dimension requirements specified in the Notice.

##### Authorizing provisions

2. This Notice is made under section 117 of the Heavy Vehicle National Law (HVNL) as in force in each state or territory (HVNL).

##### Title

3. This Notice may be cited as the *Victoria Class 1 Load Carrying Vehicle and Special Purpose Vehicle Mass And Dimension Exemption Notice 2019 (No. 1)*.

##### Commencement

4. This Notice comes into operation on 10 February 2019.

##### Expiry

5. This Notice expires on 9 February 2024.

##### Definitions

6. Unless otherwise stated, words and expressions used in this Notice have the same meanings as those defined in the HVNL.
7. In this Notice,

**“Class 1 OSOM Route Access Lists”** means the Victorian Class 1 Oversize and Overmass (OSOM) Route Access Lists referenced in Appendix 1;

**“Hume Freeway”** means the Hume Freeway between Thomastown and the NSW border and includes the Hume Highway at Kalkallo;

**“main road”** means a road described in the Victorian Class 1 OSOM Route Access Lists;

**“MDL National Regulation”** means the *Heavy Vehicle (Mass, Dimension and Loading) National Regulation*;

**“Port of Melbourne roads”** means Dock Link Road, those south of Footscray Road servicing Swanson Dock and Appleton Dock, and Dockside Road and Williamstown Road west of Todd Road in the Port of Melbourne;

**“Princes Freeway”** means the Princes Highway and Freeway between Officer and Traralgon and also between Laverton North and Corio;

**“prohibited bridge”** means a bridge described in the Victorian Class 1 OSOM Route Access Lists;

**“prohibited road”** means a road described in the Victorian Class 1 OSOM Route Access Lists;

**“restricted route”** means the routes described in the Victorian Class 1 OSOM Route Access Lists;

**“rural area”** means an area described in the Victorian Class 1 OSOM Route Access Lists;

**“tollways”** means:

- (a) CityLink, being all roads declared under section 61 or 93H of the *Melbourne City Link Act 1995 (Vic)*; and
- (b) EastLink, being all roads declared under sections 143 and 144 of the *Eastlink Project Act 2004 (Vic)*;

**“Western Freeway”** includes the Western Highway and Freeway between Deer Park and Ballarat.

## **Application**

8. This Notice applies to Class 1 Heavy Vehicles in Victoria.
9. Part 2 of this Notice applies to all Class 1 heavy vehicles.
10. Part 3 of this Notice applies to load carrying vehicles.
11. Part 4 of this Notice applies to special purpose vehicles.

## **PART 2: EXEMPTION FROM PRESCRIBED MASS AND DIMENSION REQUIREMENTS FOR ALL CLASS 1 HEAVY VEHICLES**

### **Application of this Part**

12. Subject to Clauses 13 and 14, this Part applies to all class 1 heavy vehicles.
13. If a mass or dimension requirement is set out in Part 3 or 4 of this Notice in relation to a category of vehicle, that requirement applies to that category of vehicle instead of the relevant requirement set out in this Part.
14. If a condition set out in Part 3 or 4 of this Notice in relation to a category of vehicle conflicts with a condition set out in this Part, that condition applies to that vehicle instead of the condition set out in this Part.

### **Exemption from prescribed mass requirements – axles relating to tyre width**

15. A class 1 heavy vehicle described in clauses 16 to 18 is exempt from the mass requirements in section 4 and Table 1 (Axle mass limits table) of Part 2 of Schedule 1 to the MDL National Regulation.

### **Mass requirement – Condition**

16. The mass on the single axle of a class 1 heavy vehicle must not be more than the mass limit stated in relation to the single axle in Table 1 of this Notice as set out in clauses 17 and 18.
17. If a class 1 vehicle that has an axle fitted with 2 tyres, the mass limit for the axle in relation to the narrowest tyre on that axle as specified in Column 1 of Table 1, is the limit set out opposite that axle in Column 2 of that Table.
18. If a class 1 heavy vehicle has an axle fitted with 4 tyres, the mass limit for the axle in relation to the narrowest tyre on that axle as specified in Column 1 of Table 1 is the limit set out opposite that axle in Column 3 of that Table.

**Table 1 – Single axle**

Item No.	Column 1		Column 2	Column 3
	Tyre width of the narrowest tyre on the axle		Mass limit (t), if the axle has <b>2 tyres</b>	Mass limit (t), if the axle has <b>4 tyres</b>
	at least (mm)	but less than (mm)		
1	190	228	4.5	9
2	228	254	5	9.5
3	254	279	6	10
4	279	305	6.5	11
5	305	330	7	12
6	330	356	7.5	13
7	356	381	8	14
8	381	406	9	14
9	406	458	10	14
10	458	508	11	14
11	508	—	12	14

**Exemption from prescribed mass requirements - axle groups relating to tyre width**

19. A class 1 heavy vehicle described in clause 20 is exempt from the mass requirements in section 4 and Table 1 (Axle mass limits table) of Part 2 of Schedule 1 to the MDL National Regulation.

**Mass requirement - condition**

20. The mass on the axle groups of a class 1 heavy vehicle must not be more than the mass limit stated in relation to the axle group in Table 2 of this Notice as set out in clauses 21 and 22.

21. If a class 1 heavy vehicle has a tandem axle fitted with 4 tyres, the mass limit for the axle as specified in Column 1 of Table 2 in relation to the narrowest tyre on that tandem axle is the limit set out opposite that axle in Column 2 of that Table.

22. If a class 1 heavy vehicle has a tri-axle group fitted with 6 tyres, the mass limit in relation to the narrowest tyre as specified in Column 1 of Table 2 on that tri-axle group is the mass limit set out opposite that axle in Column 3 of that Table.

**Table 2 – Axle group**

	<i>Column 1</i>		<i>Column 2</i>	<i>Column 3</i>
<i>Item No.</i>	<i>Tyre width of the narrowest tyre in the group</i>		<i>Mass limit (t) for a tandem axle group with 4 tyres</i>	<i>Mass limit (t) for a tri-axle group with 6 tyres</i>
	<i>at least (mm)</i>	<i>but less than (mm)</i>		
1	381	406	16.5	22
2	406	431	17	23
3	431	458	17.5	24
4	458	482	18	25
5	482	508	18.5	26
6	508	—	19	27

**Exemptions from prescribed dimension requirements**

23. A class 1 heavy vehicle of the category set out in Column 1 of Table 3 of this Notice is exempt from the dimension requirement of the MDL National Regulation that is specified in Column 2 of the Table.

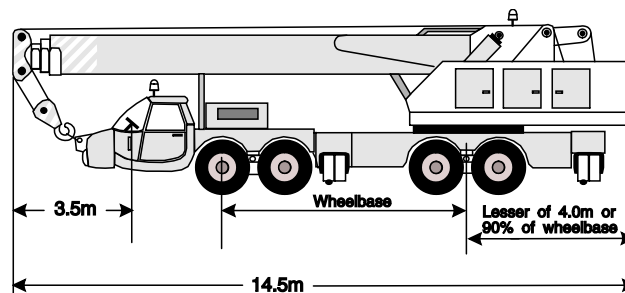
**Dimension requirement - condition**

24. The dimension set out in Column 3 of Table 3 for a category of vehicle set out in Column 2 of that Table must not be more than the dimension limit set out in Column 4 of the Table opposite that category of vehicle.

**Note:** If a dimension limit is not specified in Table 3 in relation to a class 1 heavy vehicle, the relevant dimension limit is the limit specified for that vehicle in Schedule 6 of the MDL National Regulation.

**Table 3 – Dimension limits**

<i>Item No.</i>	<i>Column 1 Category of vehicle</i>	<i>Column 2 Provision of MDL National Regulation exempted from</i>	<i>Column 3 Dimension</i>	<i>Column 4 Limit</i>
1	Any vehicle except an agricultural vehicle	Section 7(1) of Schedule 6	Width	3.5m
2	Any vehicle except an agricultural vehicle	Section 8 of Schedule 6	Height	4.6m
3	Any combination except an agricultural combination	Section 3 of Schedule 6	Length	25m
4	Special purpose vehicle	Section 3 of Schedule 6	Length	14.5m
5	Special purpose vehicle	Section 5 of Schedule 6	Length from the rear overhang	Lesser of 4m or 90% of the wheelbase
6	Semi-trailer	Sections 5 and 12(1) of Schedule 6	Length from the rear overhang	Lesser of 5.5m or 25% of the overall length of the laden combination
7	Special purpose vehicle	Section 13 of Schedule 6	Projection in front of the centre of the steering wheel	3.5m



**Example: Illustration of rigid mobile crane, showing dimension limits.**

25. The centre lines of adjacent axles in an axle group on a class 1 heavy vehicle must be at least 1.2m apart.

**Other conditions of exemptions**

26. The exemptions in this Notice are subject to the conditions set out in *Schedule 8 Conditions of Mass or Dimension Exemptions Applying to Class 1 heavy vehicles* of the MDL National Regulation and to any conditions specified in this Notice.

## PART 3 EXEMPTION FROM PRESCRIBED MASS AND DIMENSION REQUIREMENTS FOR CLASS 1 HEAVY VEHICLES THAT ARE LOAD-CARRYING VEHICLES

### Application of this Part

27. This Part applies to class 1 heavy vehicles that are load-carrying vehicles.

### Exemption from prescribed mass requirements

28. A class 1 heavy vehicle described in clause 31 is exempt from the following mass requirements set out in Schedule 1 to the MDL National Regulation—

- a. Section 2(1)(a)(iv) and (b); and
- b. Section 4 (Mass limits for a single axle or axle group) and Table 1 (Axle mass limits table).

### Mass requirements - condition

29. The mass of a class 1 heavy vehicle described in clause 30 must not be more than the mass limits set out in clause 30 and 31 for that type of vehicle.

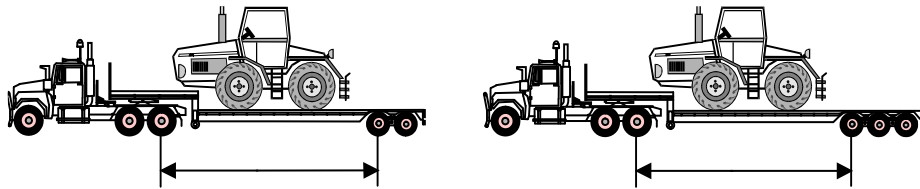
30. If a load-carrying vehicle consisting of a tandem drive prime mover is towing—

- a. a low loader; or
- b. a low loader dolly and a low loader; or
- c. a jinker; or
- d. a low loader dolly and a jinker—

the mass on that class 1 heavy vehicle's single axle or axle group (as the case may be and as described in Column 1 of Table 4) must not be more than the mass limit specified in Column 2.

**Table 4-Mass Requirements**

	<i>Column 1</i>	<i>Column 2</i>
<i>Item No.</i>	<i>Single axle or axle group</i>	<i>Mass limit (t)</i>
1	Steer axle with 2 tyres	6
2	Twinsteer axle group without a load-sharing suspension system	10
3	Twinsteer axle group with a load-sharing suspension system	11
4	Single axle with 8 tyres	12
5	Tandem axle group with 8 tyres	18.5
6	Tandem axle group with 16 or more tyres, on a trailer	21
7	Tri-axle group with 12 or more tyres	25
8	Oversize tri-axle group with 12 or more tyres or quad-axle group with 16 or more tyres	27



**Figure 3: Illustration of distance for the purpose of clause 32.**

31. The mass of a load-carrying vehicle described in clause 30, when carrying a large indivisible item, must not be more than the lower of the following masses—
- a. either—
    - i. 49.5t if the distance between the centre-line of the rearmost axle of the towing vehicle and the centre-line of the foremost axle of the combination's rear axle group is at least 6m; or
    - ii. 49.5t minus 1t for every 0.3m by which the distance referred to in subparagraph (i) is less than 6m;
  - b. the mass that is the sum of the mass limits stated in Table 4 in relation to each of the axle groups and single axles of the vehicle.
32. The mass requirements set out in this Division do not apply to a load-carrying vehicle that—
- a. is not described in clause 30; or
  - b. has a single axle or an axle group that is not described in Column 1 of Table 4.

Note: If a load-carrying vehicle is not described in clause 31, or is described in clause 30 but does not have a single axle or axle group described in Column 1 of Table 4, the relevant mass limits for that class 1 heavy vehicle are the mass limits specified for that vehicle in the MDL National Regulation.

### **Dimension requirements - condition**

33. A class 1 heavy vehicle that is an unladen low loader, low loader dolly or jinker, with 4 tyres on each axle must not be wider than 2.5m.
34. A class 1 heavy vehicle that is an unladen low loader, low loader dolly or jinker, with 8 tyres on each axle must not be wider than 2.7m.

### **Other condition**

35. If a load on a class 1 heavy vehicle can be safely loaded in more than one way, it must be loaded in a way that minimises the width of the vehicle and its load.



### **Areas or routes for load-carrying vehicles**

36. Subject to clauses 38 to 40, a load-carrying vehicle that complies with the prescribed mass requirements may be used on all roads in Victoria.
37. Subject to clauses 38 to 40, a load-carrying vehicle that does not comply with the prescribed mass requirements may be used on all roads in Victoria other than prohibited bridges.
38. A load-carrying vehicle that is not wider than 2.5m or longer than 19m may be used on all roads in Victoria other than restricted routes.
39. A load-carrying vehicle that is wider than 2.5m or longer than 19m but not wider than 3m or longer than 22m may be used on—
  - a. all roads in the Gippsland Ranges Area;
  - b. all roads in the Colac–Surf Coast Area; and
  - c. all other roads in Victoria other than—
    - i. roads in the Mountainous Area and the Otway Area; or
    - ii. restricted routes.
40. A load-carrying vehicle that is wider than 3m or longer than 22m but not wider than 3.5m or longer than 25m may be used on—
  - a. exempt roads in the Gippsland Ranges Area;
  - b. exempt roads in the Mountainous Area;
  - c. all roads in the Melbourne and Geelong Urban Area; and
  - d. all roads in and the Rural Area; —but may not be used on restricted routes.

### **Travel conditions**

41. Where a load-carrying vehicle is permitted to be used in an area or route under clauses 36 to 40 that is specified in column 1 and the vehicle is referred to in column 2 or 3 of Table 5, the vehicle may only be used in the area or route and on the days specified in column 1 of the Table at the times (if any) specified in column 2 or 3 for that vehicle.

**Table 5 Table of Travel conditions**

Column 1 Areas or routes/Days	Column 2 Travel times		Column 3 Travel times
	Wider than 2.5 m but not wider than 3.1m wide and no longer than 19 m	longer than 19m but not longer than 22m	Wider than 3.1m but not wider than 3.5m wide or longer than 22m but not longer than 25m
Rural Area	No travel restrictions	No travel restrictions	No travel between Sunset – Sunrise
Melbourne and Geelong Urban Area Monday – Friday (not public holidays)	No travel restrictions	No travel restrictions	No travel between: 6.00 am – 9.00 am; 4.00 pm – 6.30 pm; Sunset – 11.00 pm
Melbourne and Geelong Urban Area Saturday, Sunday and public holidays	No travel restrictions	No travel between Sunset – 11.00 pm	No travel between Sunset – 11.00 pm

For the purposes of this clause—

- a. the Melbourne and Geelong Urban Area does not include the Port of Melbourne Roads or the sections of the Hume Freeway, the Princes Freeway and the Western Freeway that are within the Melbourne and Geelong Urban Area;
- b. the Rural Area does not include the sections of the Hume Freeway, the Princes Freeway and the Western Freeway that are within the Rural Area.

42. The travel restrictions referred to in clause 41 do not apply to a load-carrying vehicle that is an unladen low loader or a house boat that is—

- a. no longer than 25m; and
- b. no wider than—
  - i. for a vehicle with 4 tyres per axle - 2.5m ;or
  - ii. for a vehicle with 8 tyres per axle - 2.7m.

For the purposes of this clause, an unladen low loader includes a low loader that is carrying a pilot vehicle, a low loader dolly or a jinker.

### Conditions applying to particular routes

43. The operator of a load-carrying vehicle must obtain permission from the City of Melbourne before the vehicle is used in the area of the City of Melbourne that is bounded by and includes Spring Street, Victoria Street, Peel Street, Dudley Street, Spencer Street and Flinders Street.
44. A load-carrying vehicle operating on the following tollways must contact the tollway operator as soon as practicable on knowing the travel is required, and then at least 30 minutes in advance of travel:
  - a. Citylink; and
  - b. Eastlnk

*Note: the purpose of this requirement is to provide the tollway operator in advance of the vehicle movement, and then to confirm access and traffic conditions immediately before travel.*
45. If a load-carrying vehicle does not comply with the prescribed mass requirements and is used on the West Gate Bridge—
  - a. the vehicle must travel in one of the two right hand lanes nearest the centre median; and
  - b. if it is not capable of maintaining a speed of at least 65 km/hr travelling over the bridge—
    - i. two rotating yellow warning lights must be affixed to the rear of the vehicle; or
    - ii. a pilot vehicle must travel at the rear of the vehicle within a distance of 50m.
46. Where practical and safe to do so, a load-carrying vehicle must avoid being on a bridge at the same time as a B-double or another class 1 heavy vehicle or a class 3 heavy vehicle.

### Night travel

47. Section 7 (Travel restrictions at night) of Schedule 8 of the MDL National Regulation does not apply to a load-carrying vehicle.
48. A load-carrying vehicle that, together with any load, is wider than 3.1m or longer than 22m, must not, while being used at night, travel without being accompanied by a pilot vehicle.

## PART 4 EXEMPTION FROM PRESCRIBED MASS REQUIREMENTS FOR CLASS 1 HEAVY VEHICLES THAT ARE SPECIAL PURPOSE VEHICLES

### Application of this Part

49. This Part applies to class 1 heavy vehicles that are special purpose vehicles.

### Exemption from prescribed mass requirements - axles and axle groups

50. A class 1 heavy vehicle to which this part applies is exempt from the following mass requirements in Schedule 1 to the MDL National Regulation—

- a. section 2(1)(a)(iv) and 2(b);
- b. section 4 and Table 1 (Axle mass limits table); and
- c. section 5(1) and Table 2 (Axle spacing mass limits general table).

### Mass requirements (axles and axle groups) – condition

51. For a special purpose vehicle, the mass on a single axle or axle group described in Column 1 of Table 6 of this Notice must not be more than the mass limit set out in Column 2 of that Table opposite the description.

**Table 6 – Axle mass limits (special purpose vehicles)**

<i>Item No.</i>	<i>Column 1 Type of axle or axle group</i>	<i>Column 2 Mass limits(t)</i>
1	Single axle or single axle group fitted with— (a) single tyres (b) dual tyres	7 10
2	Twinsteer axle group— (a) without a load-sharing suspension system (b) with a load-sharing suspension system	10 14
3	Tandem axle group fitted with single tyres	14
4	Tri-axle group fitted with single tyres	18

52. For a special purpose vehicle, the mass on a tandem axle group fitted with dual tyres, where the centre lines of the axles are less than 1.35m apart must not be more than—

- a. 20t; or
- b. 20t minus one tonne for each 100mm by which the axle group's ground contact width is less than 2.4m; or
- c. 20t plus one tonne for each 100mm by which the axle group's ground contact width exceeds 2.5m, but not exceeding 27t in total.

53. For a special purpose vehicle, the mass on a tandem axle group fitted with dual tyres, where the centre lines of the axles are at least 1.35m apart must not be more than—

- a. 23t; or
- b. 23t minus one tonne for each 100mm by which the axle group's ground contact width is less than 2.4m; or

- c. 23t plus one tonne for each 100mm by which the axle group's ground contact width exceeds 2.5m, but not exceeding 27t in total.
54. For a special purpose vehicle, the mass on a tri-axle group fitted with dual tyres, where the centre lines of the axles are less than 1.35m apart, must not be more than—
- a. 25t; or
  - b. 25t minus one tonne for each 100mm by which the axle group's ground contact width is less than 2.4m.
55. For a special purpose vehicle, the mass on a tri-axle group fitted with dual tyres, where the centre lines of the axles are at least 1.35m apart, must not be more than—
- a. 27t; or
  - b. 27t minus one tonne for each 100mm by which the axle group's ground contact width is less than 2.4m.

**Mass requirements condition – total mass limits and axle spacing mass limits**

56. The mass of a special purpose vehicle must not be more than the lowest of the following masses—
- a. the mass that is the sum of the mass limits allowed for each single axle and axle group on the vehicle under clauses 51 to 55; or
  - b. 40t; or
  - c. the mass limit as determined by the following formula—

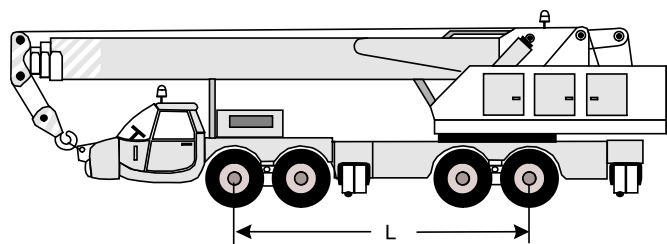
$$\text{Mass in t} = (3 \times L) + 15 \pm G$$

where—

"L" is the distance in m between the centre-lines of the vehicle's foremost and rearmost axles; and

"± G" is a number of t—

- i. to be added at the rate of one tonne for each 100mm by which the ground contact width of the rearmost axle exceeds 2.5m; or
- ii. to be subtracted at the rate of one tonne for each 100mm by which the ground contact width of the rearmost axle is less than 2.4m.



**Illustration of distance "L".**

## **Areas or routes for special purpose vehicles**

57. Subject to clauses 59 to 61, a special purpose vehicle that complies with the prescribed mass requirements may be used on all roads in Victoria.
58. Subject to clauses 59 to 61, a special purpose vehicle that does not comply with the prescribed mass requirements may be used on all roads in Victoria other than prohibited bridges.
59. A special purpose vehicle that is not wider than 2.5m may be used on all roads in Victoria other than restricted routes.
60. A special purpose vehicle that is wider than 2.5m but not wider than 3m may be used on—
- a. all roads in the Gippsland Ranges Area;
  - b. all roads in the Colac-Surf Coast Area; and
  - c. all other roads in Victoria other than—
    - i. roads in the Mountainous Area and the Otway Area; or
    - ii. restricted routes.
61. A special purpose vehicle that is wider than 3m but not wider than 3.5m may be used on—
- a. exempt roads in the Gippsland Ranges Area;
  - b. exempt roads in the Mountainous Area;
  - c. all roads in the Melbourne and Geelong Urban Area; and
  - d. all roads in the Rural Area;—
- but may not be used on restricted routes.

## **Travel conditions**

62. Where a special purpose vehicle is permitted to be used in an area or route under clause 61 and the vehicle is not wider than 3.1m, the vehicle may be used in that area or route at any time.
63. Where a special purpose vehicle is permitted to be used in an area or route under clause 61 that is specified in column 1 of Table 7 and the vehicle is wider than 3.1m but not wider than 3.5m, the vehicle may only be used in that area or route on the days specified in column 1 of Table 7 at the times specified in column 2 of the Table.

**Table 7 Travel Conditions**

<i>Column 1 Areas or routes/Days</i>	<i>Column 2 Wider than 3.1m but not wider than 3.5m</i>
Rural Area	No travel from sunset to sunrise
Melbourne and Geelong Urban Area Monday–Friday (not public holidays)	No travel between: <ul style="list-style-type: none"><li>• 6.00 am to 9.00 am</li><li>• 4.00 pm to 6.30 pm</li><li>• Sunset to 11.00 pm</li></ul>
Melbourne and Geelong Urban Area Saturday, Sunday and public holidays	No travel from Sunset until 11.00 pm

For the purposes of this clause—

- a. the Melbourne and Geelong Urban Area does not include the Port of Melbourne Roads or the sections of the Hume Freeway, the Princes Freeway and the Western Freeway that are within the Melbourne and Geelong Urban Area;
- b. the Rural Area does not include the sections of the Hume Freeway, the Princes Freeway and the Western Freeway that are within the Rural Area.

**Conditions applying to particular routes**

64. The operator of a special purpose vehicle must obtain permission from the City of Melbourne before the vehicle is used in the area of the City of Melbourne that is bounded by and includes Spring Street, Victoria Street, Peel Street, Dudley Street, Spencer Street and Flinders Street.

65. A load-carrying vehicle operating on the following tollways must contact the tollway operator as soon as practicable on knowing the travel is required, and then at least 30 minutes in advance of travel:

- c. Citylink; and
- d. Eastlnk

*Note: the purpose of this requirement is to provide the tollway operator in advance of the vehicle movement, and then to confirm access and traffic conditions immediately before travel.*

66. If a special purpose vehicle does not comply with the prescribed mass requirements and is used on the West Gate Bridge—

- a. the vehicle must travel in one of the two right hand lanes nearest the centre median; and
- b. if it is not capable of maintaining a speed of at least 65 km/hr travelling over the bridge—
  - i. two rotating yellow warning lights must be affixed to the rear of the vehicle; or
  - ii. a pilot vehicle must travel at the rear of the permit vehicle within a distance of 50m.

67. Where practical and safe to do so, a special purpose vehicle must avoid being on a bridge at the same time as a B-double or another class 1 heavy vehicle or a class 3 heavy vehicle.

68. The following restrictions apply to a special purpose vehicle that is a crane being used on a freeway or tollway—
- a. a crane with a maximum speed capability of 91km/h or more may use all freeways and tollways;
  - b. a crane with a maximum speed capability more than 61 km/h but not more than 90km/h may use all freeways and tollways other than—
    - i. the West Gate Bridge;
    - ii. the section of the Western Ring Road with the steep gradients between Pascoe Vale Road and Tullamarine Freeway; and
    - iii. all tunnels;
  - c. a crane with a maximum speed capability not more than 60 km/h may not be used on any freeway or tollway.

For the purposes of this clause, 'maximum speed capability of a crane' is the maximum speed the crane is able to reach on a horizontal surface, as determined by the crane manufacturer.

Peter Caprioli  
*Executive Director (Freight and Supply Chain Productivity)*  
**National Heavy Vehicle Regulator**



## **Appendix 1**

Victorian Class 1 Oversize and Overmass (OSOM) Route Access Lists

Note: the Victorian Class 1 Oversize and Overmass (OSOM) Route Access Lists are maintained by Vic Roads, and are published on its website.